

SmartAssembly™ for Pro/ENGINEER

Greatly Improve Your Productivity and Enforce Standards



What is SmartAssembly?

- SmartAssembly is a third party software tool for Pro/ENGINEER.
- Create SmartAssembly applications for standardizing and automating almost any Pro/ENGINEER task from design to drawing to manufacturing.
- Applications are quickly created using an easy to understand script language.
- Edit the value of dimensions or parameters, add features to parts, assemble parts or subassemblies, calculate mass properties, export models: all of these tasks can be accomplished with less mouse clicks using SmartAssembly.

Key Features

- Automatic creation and configuration of new parts and assemblies.
- Works with or without Pro/INTRALINK. Automatic checkout of required components and library objects.
- Duplication of existing objects, with or without Pro/INTRALINK.
- Automatic placement of part-level features from the assembly.
- Automatic assembly of new or existing parts and assemblies.
- Commands for drawings and manufacturing.
- Commands for family tables, pattern tables, and Excel.
- Commands for measurements and mass properties.
- Access to commands not available in Pro/ENGINEER.
- Display design information and measurements in the SmartAssembly GUI to guide the user during component placement and/or configuration.
- All features and components created with SmartAssembly are regular Pro/E features with full edit and redefine capability.
- When a SmartAssembly component is modified, all the related objects and features are updated automatically.
- When a SmartAssembly component is deleted, all the related objects and features are deleted automatically.
- Full programming functionality including variables, conditional statements, loops, arrays, and tables.

How it Works

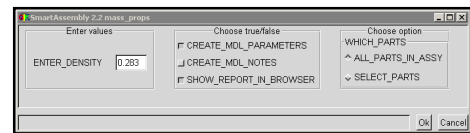
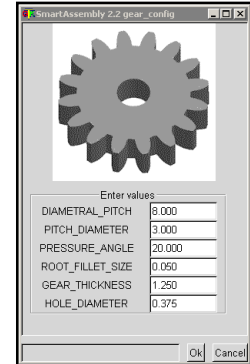
- SmartAssembly interacts with Pro/ENGINEER automatically.
- No additional Pro/ENGINEER modules are required.
- The SmartAssembly script contains the design rules and drives UDFs, parts, and assemblies through the GUI.
- All project related parts, assemblies, drawings, manufacturing files, and other documents are defined as templates for reuse.
- Copy and rename the entire template in seconds.
- Add, configure, modify, and delete SmartAssembly components to and from the project as required.

Key Benefits

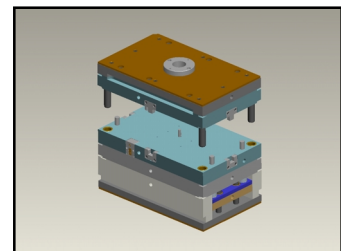
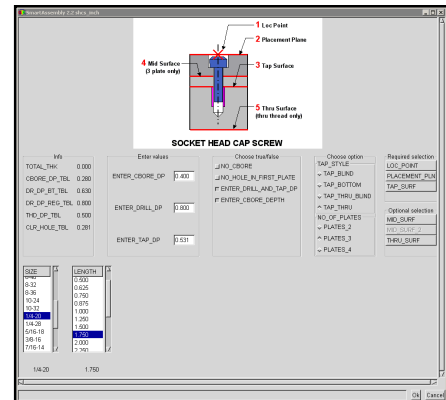
- Standardization of all design criteria and objects. Use existing local standards and libraries or create new.
- UDF standardization and placement automation. Allows a more comfortable and user friendly work flow when using UDFs.
- No need for layouts or Pro/PROGRAM for complete design automation.
- Large increase in productivity for repetitive tasks is common.
- New and experienced users become more productive.

More Information

- **CADQUEST** is an authorized reseller of SmartAssembly and SmartHolechart. We provide complete turnkey solutions including software sales and maintenance, consulting services, custom applications, and training using our own textbooks and examples.
- Contact us at 717-565-1965 and ask for a live demonstration of SmartAssembly. Visit us online and watch SmartAssembly in action at www.cadquest.com



You create the SmartAssembly GUI with input fields for all related design references, options, and dimensions.



Custom SmartAssembly applications are available for many areas including mold design, die design, and tooling design.

